



[Summary](#) [FAQs](#) [Schedule](#)

[Register Now](#)

[Already Registered?](#)

**Los Angeles  
UCLA**

**September 14, 2022  
– September 17,  
2022**

**ASAP/13**

## Schedule

Here's what's scheduled for the event.

🕒 Viewing in Pacific Time [Adjust](#)

### September 14, 2022

> **Wednesday Night at the W**

Social

4:00 PM-6:00 PM PT

### September 15, 2022

∨ **Looking Otherwise: Aesthetics of  
Viewing and Beholding**

8:30 AM-10:00 AM PT

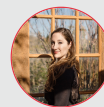
Virtual Session



**Monica  
Steinberg**  
Assistant  
Professor,  
American Studies  
University of Hong  
Kong



**Kathryn Waring**  
PhD Student  
McMaster  
University



**Ali Kheradyar**  
UCLA



**Laurel  
McLaughlin**  
PhD Candidate,  
History of Art  
Bryn Mawr College

Monica Steinberg, "Contrast Agents: JSG Boggs at the Edge of Law"

Laurel McLaughlin, "On the Edge of Pedagogical Rituals from Tania Bruguera and Tania El Khoury"

Ali Kheradyar, "A Queer Axis of Solidarity: Arshia Fatima Haq's *Azadi* in the Sky"

Kathryn Waring, "Gazing Through the Viewfinder: Visualizing Disability Narratives and the Politics of Automediaality"

- > **Solidarity and Counternarrative: Reshaping Public Imaginaries**  
 Virtual Session 8:30 AM-10:00 AM PT
- > **Edge-effects and Asia's 'Archipelagos'**  
 Virtual Session 8:30 AM-10:00 AM PT
- > **INTERLINKED**  
 Virtual Session 8:30 AM-9:30 AM PT
- > **How Things Will Go: Genre and Infrastructure in the Environmental Humanities (Part 1)**  
 Virtual Session 8:30 AM-10:00 AM PT
- > **American Conservatism and the Literary (Part 1)**  
 Virtual Session 8:30 AM-10:00 AM PT
- > **Edge matter: manual ecologies, softness, and balmy elsewhere**  
 Virtual Session 8:30 AM-10:00 AM PT
- > **Book Discussion: The African Heritage of Latinx and Caribbean Literature by Sarah Quesada**  
 Hybrid Session 10:15 AM-11:45 AM PT
- > **Scenes of Reverberation: Music and Worldmaking**  
 Hybrid Session 10:15 AM-11:45 AM PT
- > **Interrogating Race at the Edges of the Human**  
 Hybrid Session 10:15 AM-11:45 AM PT
- > **Too Soon? Critique at the Doubled Edges of the Pandemic Present**  
 Hybrid Session 10:15 AM-11:45 AM PT
- > **"WEIRD SENSATION FEELS GOOD": ASMR, Digital Intimacy, and the Internet Body**  
 Virtual Session 10:15 AM-11:45 AM PT
- 10:15 AM-11:45 AM PT

- › **Edging Into New Worlds Through Collective Imagination: Da Grove's Art Against Carcerality in Dallas,**
  
- › **CANCELLED: The Difference the State Makes: At the Edge of Queer of Color Transnational Critiques (1)** 10:15 AM-11:45 AM PT
  
- › **The Line** 10:15 AM-11:45 AM PT
  
- › **The Monstrous, The Obscene, and The Dirty** 10:15 AM-11:45 AM PT
  
- › **Member and Awards Lunch** 11:45 AM-1:15 PM PT  
Social
  
- › **Survival is Insufficient: Infrastructures of Preservation and Transmission (Part 1)** 1:30 PM-3:00 PM PT  
Hybrid Session
  
- › **Edges of Pleasure and Pain in Masochistic Capitalism** 1:30 PM-3:00 PM PT  
Hybrid Session
  
- › **South-South Internationalism in Literary Exchange (Part 1)** 1:30 PM-3:00 PM PT  
Hybrid Session
  
- › **Psychoanalysis on the Edge / Of Nervous Breakdown (Part 1)** 1:30 PM-3:00 PM PT  
Hybrid Session
  
- › **Trans and Queer Speculations** 1:30 PM-3:00 PM PT
  
- › **Performance Literacy for Political Action** 1:30 PM-3:00 PM PT
  
- › **Space and Affect** 1:30 PM-3:00 PM PT
  
- › **Postcolonial Love/Hate Reading (Part 1)** 1:30 PM-3:00 PM PT
  
- › **LAST BUTCH Tour** 2:00 PM-3:00 PM PT

Social

- **Hemispheric Edge Play** 3:15 PM-4:45 PM PT  
Hybrid Session
- **Edge Spaces** 3:15 PM-4:45 PM PT  
Hybrid Session
- **On the edges of racial containment: photography, land, and the ethnographic gaze** 3:15 PM-4:45 PM PT  
Hybrid Session
- **Genre and Minoritarian Strategies** 3:15 PM-4:45 PM PT  
Hybrid Session
- **Deaf Walls Speak: Art and Testimony from Guantanamo** 3:15 PM-4:45 PM PT  
Virtual Session
- **Form and the Moment** 3:15 PM-4:45 PM PT
- **Meme Aesthetics (Part 1)** 3:15 PM-4:45 PM PT
- **Sound Studies on the Edge** 3:15 PM-4:45 PM PT
- **The Creative Team from A League of Their Own (2022) in conversation with Jennifer Doyle** 6:00 PM-7:00 PM PT  
Keynotes
- **Keynote Reception** 7:00 PM-8:30 PM PT  
Social

## September 16, 2022

- **How Things Will Go: Genre and Infrastructure in the Environmental Humanities (Part 2)** 8:30 AM-10:00 AM PT  
Virtual Session
- **American Conservatism and the Literary (Part 2)** 8:30 AM-10:00 AM PT  
Virtual Session



- |  |                      |
|--|----------------------|
| <p>› <b>Horizons of Caribbean Aesthetics (Part 1)</b><br/>Virtual Session</p>  | 8:30 AM-10:00 AM PT  |
| <p>› <b>Re-writing the Global</b><br/>Virtual Session</p>  | 8:30 AM-10:00 AM PT  |
| <p>› <b>Practices of Assembly in Queer and Trans Studies</b><br/>Virtual Session</p>   | 8:30 AM-10:00 AM PT  |
| <p>› <b>Porous Genres, Experimental Matter</b><br/>Virtual Session</p>   | 8:30 AM-10:00 AM PT  |
| <p>› <b>Institutions of Authorship, 1965-2022</b><br/>Hybrid Session</p>   | 10:15 AM-11:45 AM PT |
| <p>› <b>Expanding the Screen in Media Studies</b><br/>Hybrid Session</p>   | 10:15 AM-11:45 AM PT |
| <p>› <b>“The Settler Postcolony?” (Part 1)</b><br/>Hybrid Session</p>  | 10:15 AM-11:45 AM PT |
| <p>› <b>At the Edge of Havana: Race and Belonging in Contemporary Cuban Art</b><br/>Virtual Session</p>                          | 10:15 AM-11:45 AM PT |
| <p>› <b>Against the Edge of the Glass Cliff: Zany, Cute, and Interesting Asian American Femininities</b><br/>Virtual Session</p> | 10:15 AM-11:45 AM PT |
| <p>› <b>The New Institutionalisms: Limits of Artworlds (Part 1)</b></p>  | 10:15 AM-11:45 AM PT |
| <p>› <b>Race-ing to the Edge</b></p>   | 10:15 AM-11:45 AM PT |
| <p>› <b>Beyond Self and Other: Collaborative Poetics</b></p>   | 10:15 AM-11:45 AM PT |
| <p>› <b>Performance by Roshanak Keshti &amp; Helen Cammock</b><br/>Hybrid Session</p>  | 12:30 PM-1:30 PM PT  |

- |   |                    |
|---|--------------------|
| <b>&gt; Gardening the Edge</b><br>Hybrid Session  | 1:45 PM-3:15 PM PT |
| <b>&gt; Free Ground? Critical Geographies of Blackness</b><br>Hybrid Session  | 1:45 PM-3:15 PM PT |
| <b>&gt; Space Sounds and Cosmic Visions at the Edge of Time</b><br>Hybrid Session                                   | 1:45 PM-3:15 PM PT |
| <b>&gt; Psychoanalysis on the Edge / Of Nervous Breakdown (Part 2)</b><br>Hybrid Session                            | 1:45 PM-3:15 PM PT |
| <b>&gt; Survival is Insufficient: Infrastructures of Preservation and Transmission (Part 2)</b><br>Hybrid Session   | 1:45 PM-3:15 PM PT |
| <b>&gt; Logistics and the Genre-Turn</b>  | 1:45 PM-3:15 PM PT |
| <b>&gt; Locating the Edge: Material and Discursive Formations of Space</b>  | 1:45 PM-3:15 PM PT |
| <b>&gt; Postcolonial Love/Hate Reading (Part 2)</b>   | 1:45 PM-3:15 PM PT |
| <b>&gt; LAST BUTCH Tour</b><br>Social   | 2:00 PM-3:00 PM PT |
| <b>&gt; Carceral Ecologies</b><br>Hybrid Session  | 3:30 PM-5:00 PM PT |
| <b>&gt; The Dissociative Imagination and the Psychedelic Future of Work</b><br>Hybrid Session                       | 3:30 PM-5:00 PM PT |
| <b>&gt; The Difference the State Makes: At the Edge of Queer of Color Transnational Critique</b><br>Virtual Session | 3:30 PM-5:00 PM PT |
| <b>&gt; (In and Out) Groove Theory</b>  | 3:30 PM-5:00 PM PT |

- › **Insider/Outsider Interpellations**

3:30 PM-5:00 PM PT
- › **Textual Visuality at the Limits of Literary Form**

3:30 PM-5:00 PM PT
- › **SNACK TIME! Creative Reflections on Asian Diasporic Nostalgia**

3:30 PM-5:00 PM PT
- › **Radical or Reactionary? Environmentalism and the Edge of Politics**

3:30 PM-5:00 PM PT
- › **Edges of Embodiment**  
Hybrid Session

5:15 PM-6:45 PM PT
- › **Hard/Soft/Lost (Part 1)**  
Hybrid Session

5:15 PM-6:45 PM PT
- › **Pleasures of Excess**  
Hybrid Session

5:15 PM-6:45 PM PT
- › **Out of Your Lane: Writing at the Edge of the Discipline (Part 1)**  
Hybrid Session

5:15 PM-6:45 PM PT
- › **The Black 1990s: African American Literature and Media at the End of the Millennium (Part 1)**  
Virtual Session

5:15 PM-6:45 PM PT
- › **Music, Art, and the Subjects of Hearing (Part 1)**  
Virtual Session

5:15 PM-6:45 PM PT
- › **Meme Aesthetics (Part 2)**

5:15 PM-6:45 PM PT

## September 17, 2022

- › **Transpacific Archipelago: Edges of Empire, Militarized Legacies, Resistant Poetics**  
Virtual Session

8:30 AM-10:00 AM PT
- › **The Edge of Belonging**

8:30 AM-10:00 AM PT

Virtual Session

› **Rethinking Documentary and Place**

8:30 AM-10:00 AM PT

Virtual Session

› **Novelization: Bakhtin on the Edge**

8:30 AM-10:00 AM PT

Virtual Session

› **Not Quite Home: Counternarratives of Space**

8:30 AM-10:00 AM PT

Virtual Session

› **Horizons of Caribbean Aesthetics (Part 2)**

8:30 AM-10:00 AM PT

Virtual Session

› **Edges of the Superset: XR Poetics**

8:30 AM-4:45 PM PT

› **Unspecificity: Sensation, Politics, and the Arts**

8:30 AM-10:00 AM PT

› **Genre on the Edge**

8:30 AM-10:00 AM PT

› **Edge of the Table: Sex, Power, Medicine**

10:15 AM-11:45 AM PT

Hybrid Session

› **"The Settler Postcolony?" (Part 2)**

10:15 AM-11:45 AM PT

Hybrid Session

› **Cracking the Egg: Multiethnic Hardboiled and Noir Narratives**

10:15 AM-11:45 AM PT

Hybrid Session

› **Edge Case: Art and Struggle**

10:15 AM-11:45 AM PT

› **Refugee Visualities at the Edge of Archival Visibility**

10:15 AM-11:45 AM PT

› **The New Institutionalisms: Crumbling Infrastructures (Part 2)**

10:15 AM-11:45 AM PT

› **Domestic Edges: Unnatural Boundaries and the (Un)Homely**

10:15 AM-11:45 AM PT

- > **Smoke, Fat, Goo: Forms Moving on the Edge** 10:15 AM-11:45 AM PT
  
- > **Saturday Boxed Lunch** 11:45 AM-1:15 PM PT  
Social
  
- > **Virtual Artist Talk, Sir Isaac Julien in conversation with Zakiyyah Iman Jackson** 12:00 PM-1:00 PM PT  
Virtual Session
  
- > **South-South Internationalism in Literary Exchange (Part 2)** 1:45 PM-3:15 PM PT  
Hybrid Session
  
- > **Contemporary Art in the Wake of Ecological Ravage** 1:45 PM-3:15 PM PT  
Hybrid Session
  
- > **The Edge of Fear** 1:45 PM-3:15 PM PT
  
- > **Critique and Epistemology** 1:45 PM-3:15 PM PT
  
- > **Myths of authorship in the contemporary period** 1:45 PM-3:15 PM PT

**cvent**

Copyright © 2000-2022 Cvent, Inc. All rights reserved.

[Event Management Software](#) | [Mobile Event Apps](#) | [Survey Software](#) | [Event Venues](#) | [Strategic Meetings Management](#)  
[Privacy Policy](#)